

2016

Installation Instructions for Power Pro 50 Lesco

We appreciate your purchase of L.T. Rich's Product. Please Verify Contents before beginning installation.



JLD
L.T.RICH
3/25/2016



SHIPPING CONTENTS 2

1. PARTS2

2. BAG CONTENT2

3. TOOLS RECOMMENDED2

PREPARE SPREADER FOR ATTACHMENT 3

1. REMOVE KICKSTAND3

INSTALL POWER PRO 50 TO SPREADER 3

1. ATTACH MOUNTING BRACKET TO SPREADER USING (4) ¼-20 x 1-1/2 FLANGE BOLTS, (4) ¼ FLAT WASHERS, (4) ¼-20 NYLOCK NUTS 3

2. INSTALL CONTROL PANEL4

3. INSTALL LEVER TO LESCO HANDLE5

4. SECURE CABLES USING CABLE TIES6

TEST 6

1. START ENGINE6

2. TURN CHOKE OFF AFTER ENGINE STARTS.....7

3. TEST MOBILIZATION7

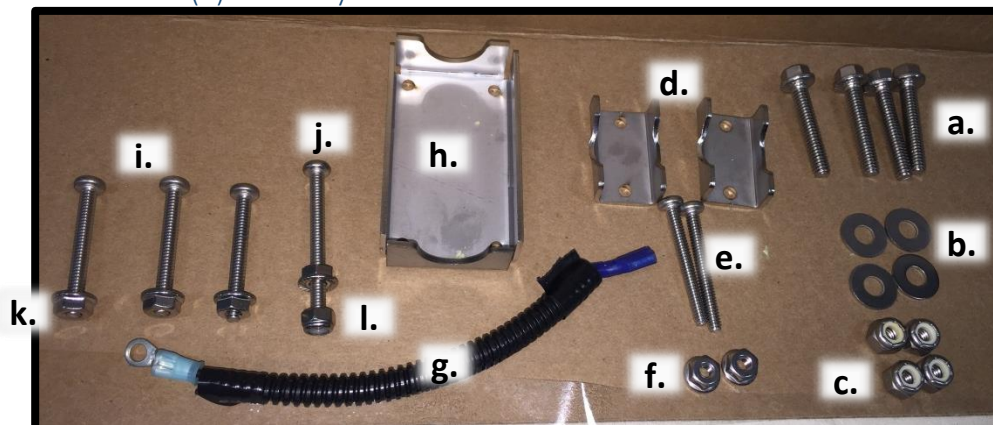
4. TURN MACHINE OFF7

SHIPPING CONTENTS

1. Parts
 - a. Power Pro 50



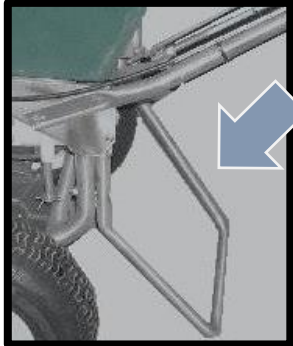
2. Bag Content
 - a. (4) ¼-20 x 1-1/2 Flange Bolts
 - b. (4) ¼ Flat Washers
 - c. (4) ¼-20 Flange Nut
 - d. (2) Clamps (WS039)
 - e. (2) 10-24 x 1 ¾" Machine Screw
 - f. (2) 10-24 Flange Nuts
 - g. (1) Ground Wire
 - h. (1) Large Bracket (WS046)
 - i. (3) 10-24 x 1 3/4" Machine Screw
 - j. (1) 10-24 x 2 1/4" Machine Screw
 - k. (4) 10-24 Flange Nuts
 - l. (1) 10-24 Nylock Nut



3. Tools Recommended
 - a. 3/8" Wrench and Socket
 - b. Philips Head Screwdriver

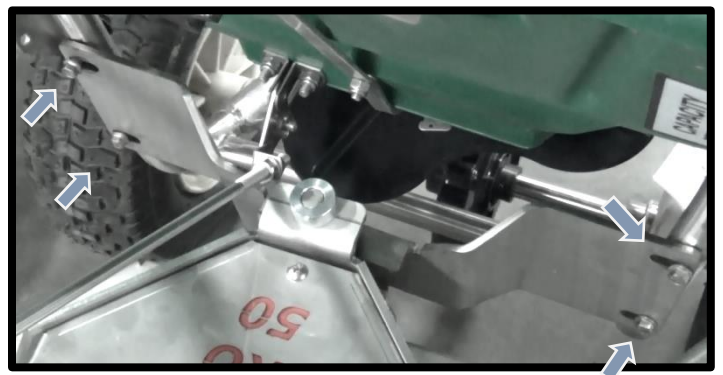
Prepare Spreader for attachment

1. Remove Kickstand



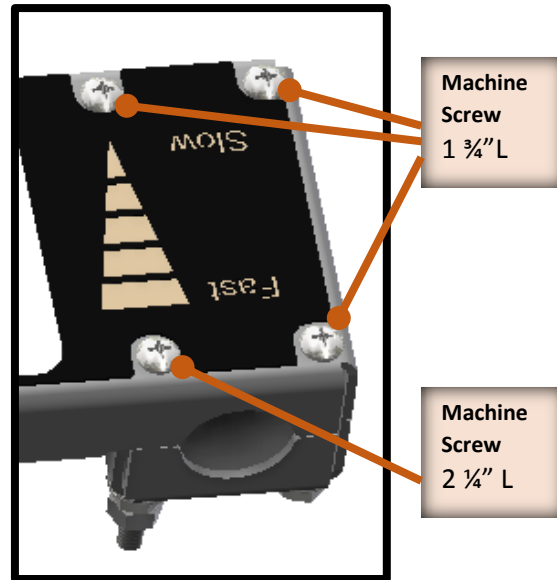
Install Power Pro 50 to Spreader

1. *Attach* Mounting Bracket to Spreader using (4) ¼-20 x 1-1/2 Flange Bolts, (4) ¼ Flat Washers, (4) ¼-20 Nylock Nuts
 - a. *Prop* Spreader Handle for access to holes
 - b. *Install* loosely each Bolt/washer/nut into Holes as shown
 - c. *Tighten* when in position

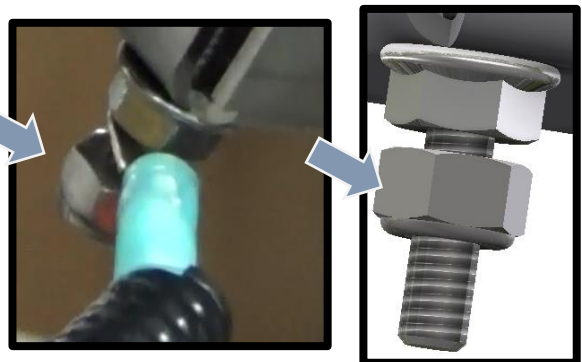


2. *Install Control Panel*

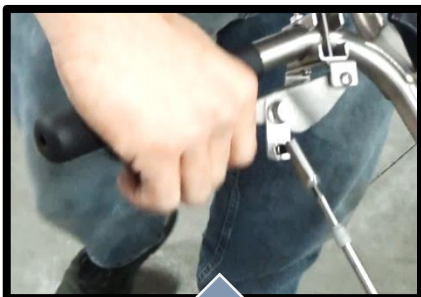
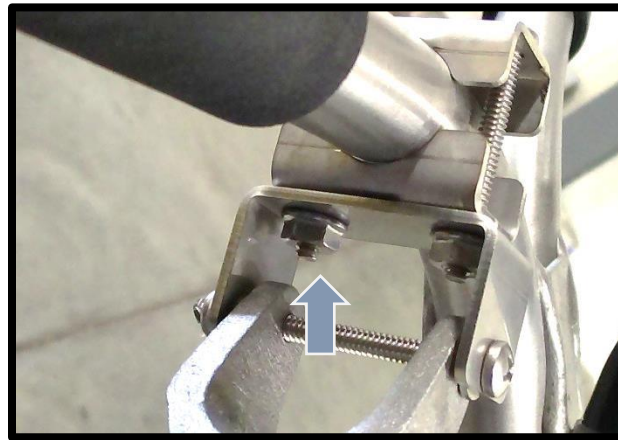
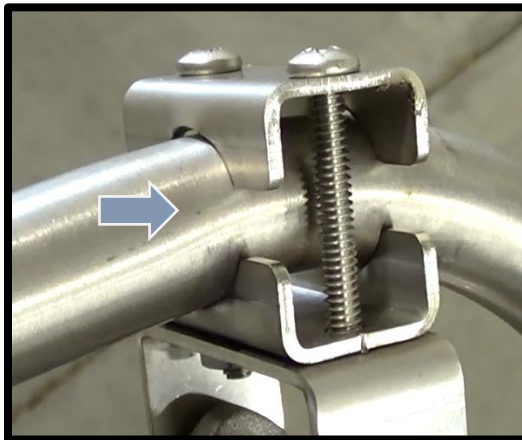
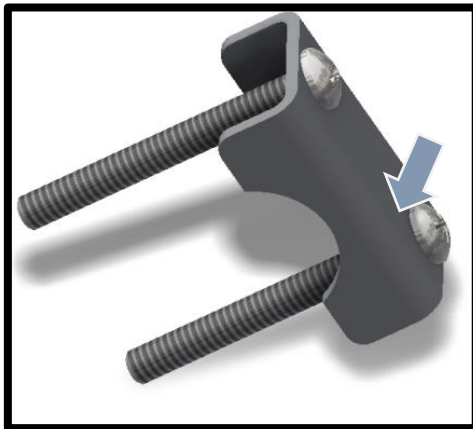
- a. *Clamp Control Panel midway up handle using ITEM D: (1) Large Bracket (WS046) using (3) 10-24 x 1 3/4" Machine Screw, (1) 10-24 x 2 1/4" Machine Screw, (4) 10-24 Flange Nuts*



- b. *Install Ground Wire using (1) 10-24 Nylock Nut on 2 1/4" Machine Screw*



3. *Install Lever to Lesco Handle*
 - a. *Assemble (1) Clamp (WS039) with (2) Install 10-24 x 1 3/4" Machine Screw*
 - b. *Attach 2nd Clamp (WS039) with Handle*
 - c. *Clamp Handle between Clamps*
 - d. *Install (2) 10-24 Flange Nuts*
 - e. *Squeeze Lever to ensure comfort and working properly*

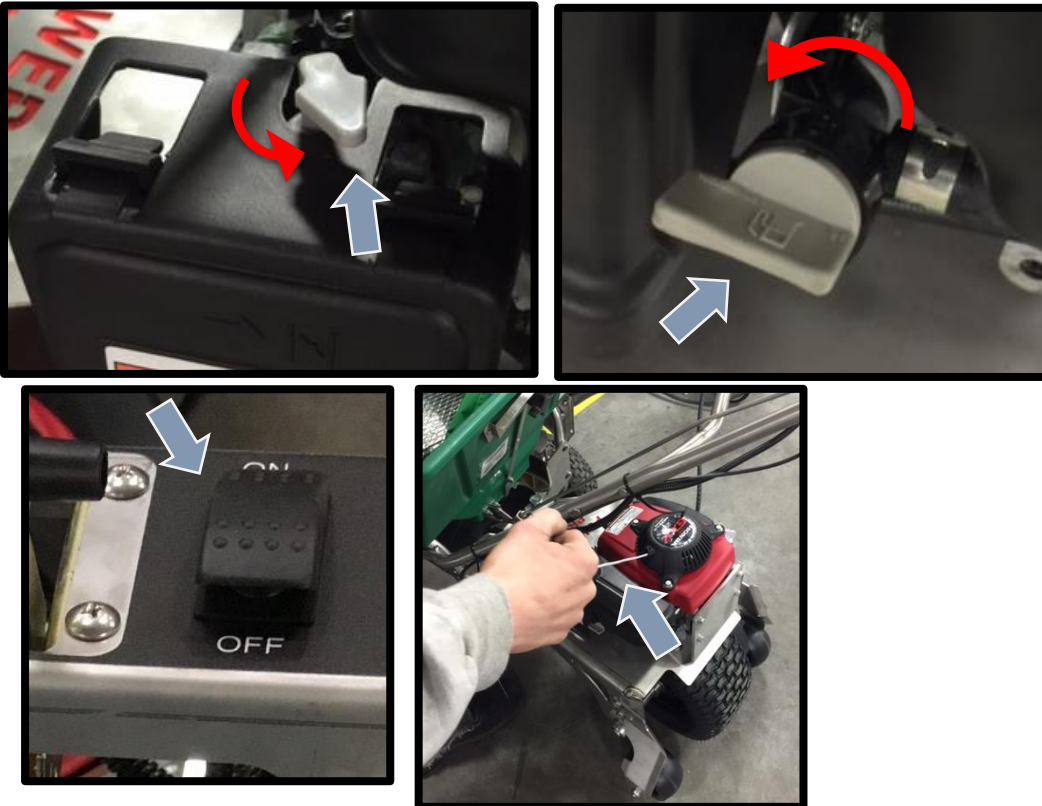


4. *Secure Cables using Cable Ties*

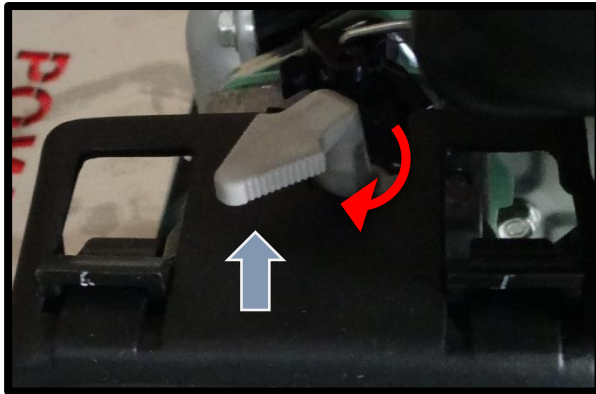


TEST

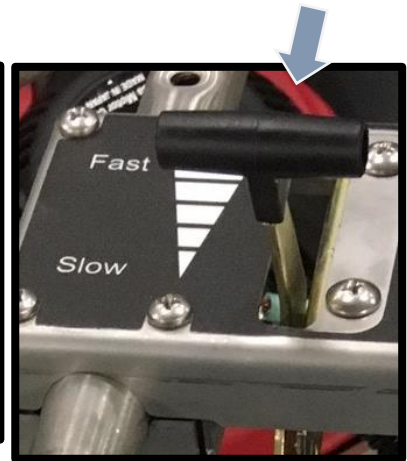
1. *Start Engine*
 - a. *Turn Choke to ON position*
 - b. *Turn Fuel to ON*
 - c. *Turn Rocker Switch ON*
 - d. *Pull Engine Start Cord*



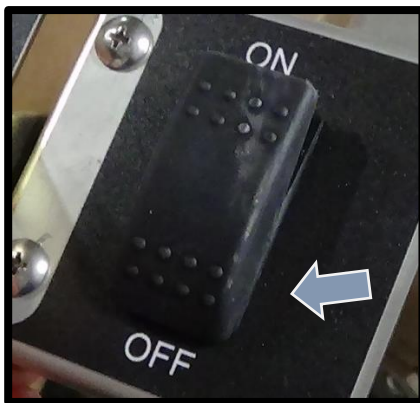
2. Turn Choke OFF after Engine Starts



3. Test mobilization
- Pull the Engagement lever back to engage Motor
 - Walk with the machine
 - Set Throttle Lever to adjust Speed



4. Turn Machine OFF
- Turn Rocker Switch OFF



For any questions please contact us at toll free (877) 482-2040, Mon-Fri 8 a.m. to 4:30 p.m.